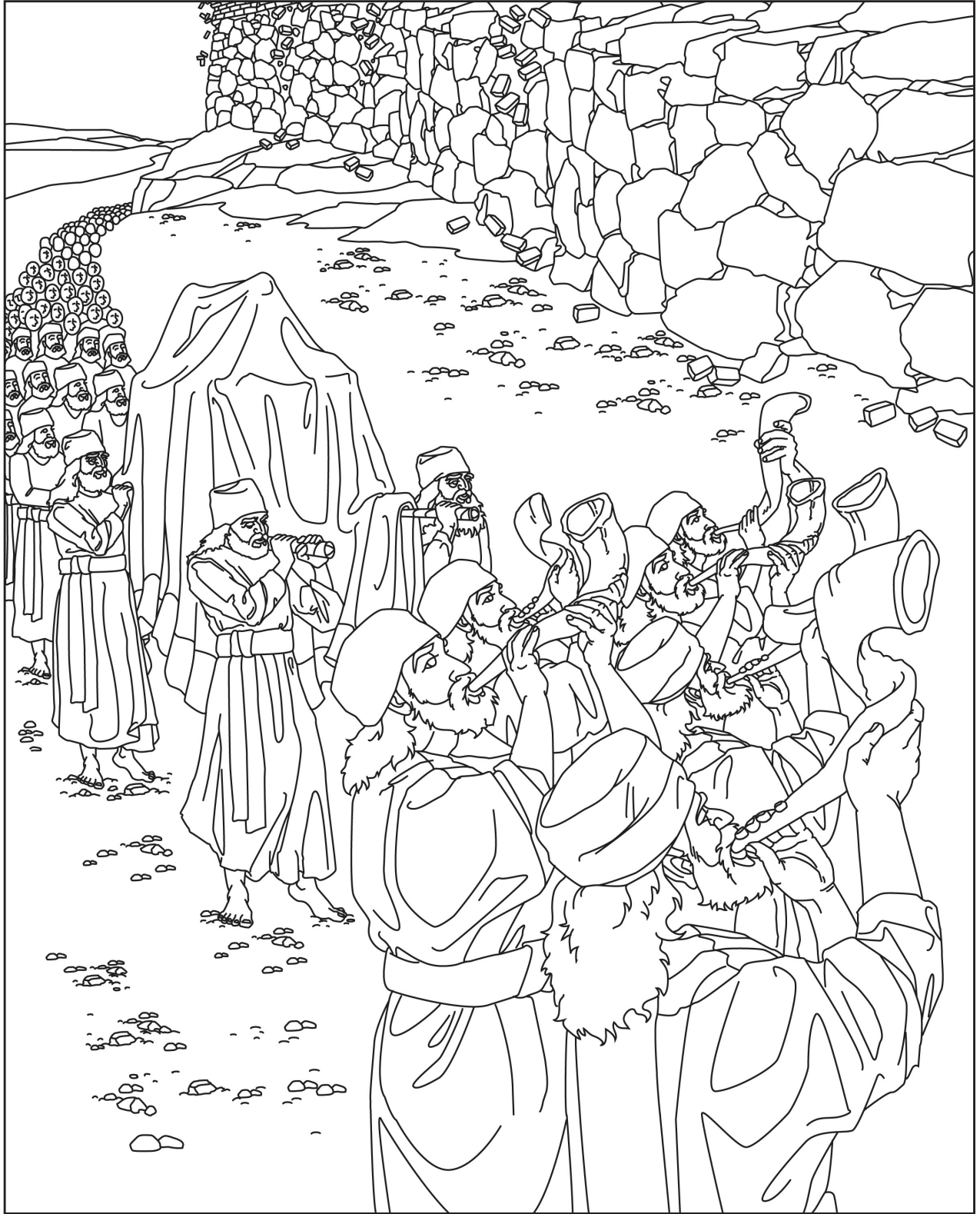


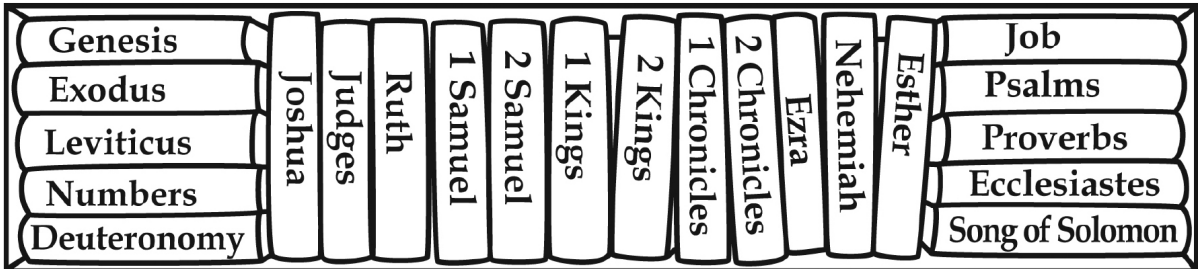
The Book of Joshua



*"Be strong and courageous! Do not tremble or be dismayed,
for the LORD your God is with you wherever you go." (Joshua 1:9)*

Bible Bookcase

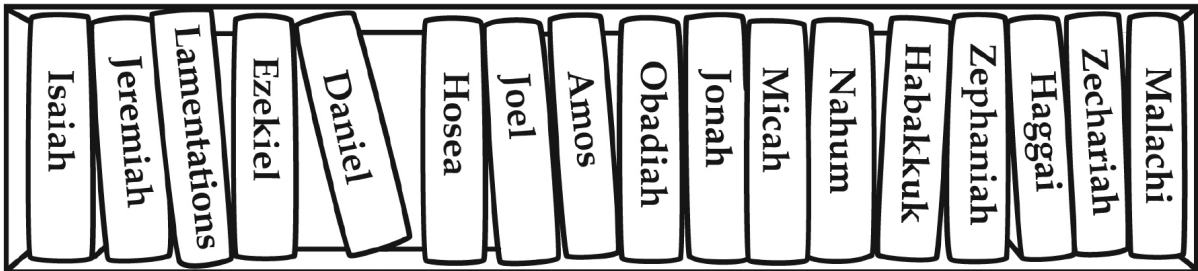
OLD TESTAMENT



LAW

HISTORY

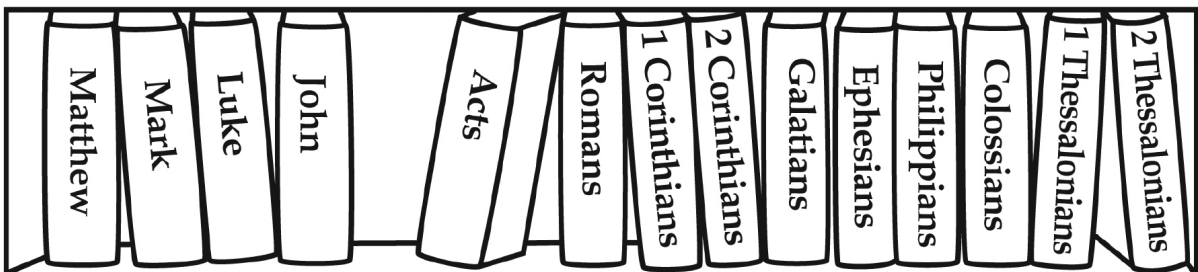
POETRY



MAJOR PROPHETS

MINOR PROPHETS

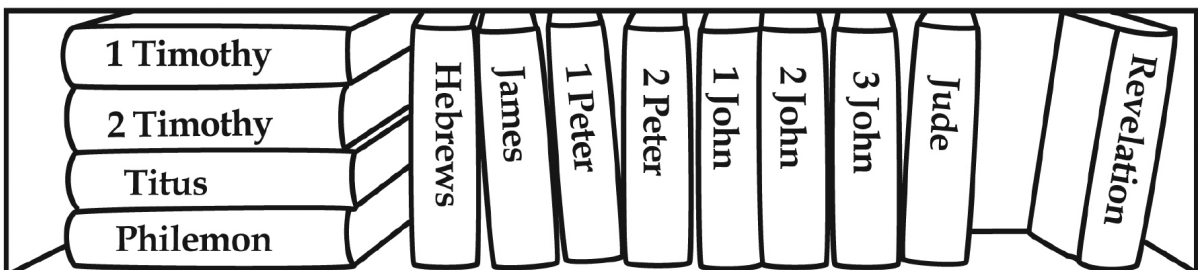
NEW TESTAMENT



GOSPELS

HISTORY

LETTERS to the CHURCHES



LETTERS to FRIENDS

GENERAL LETTERS

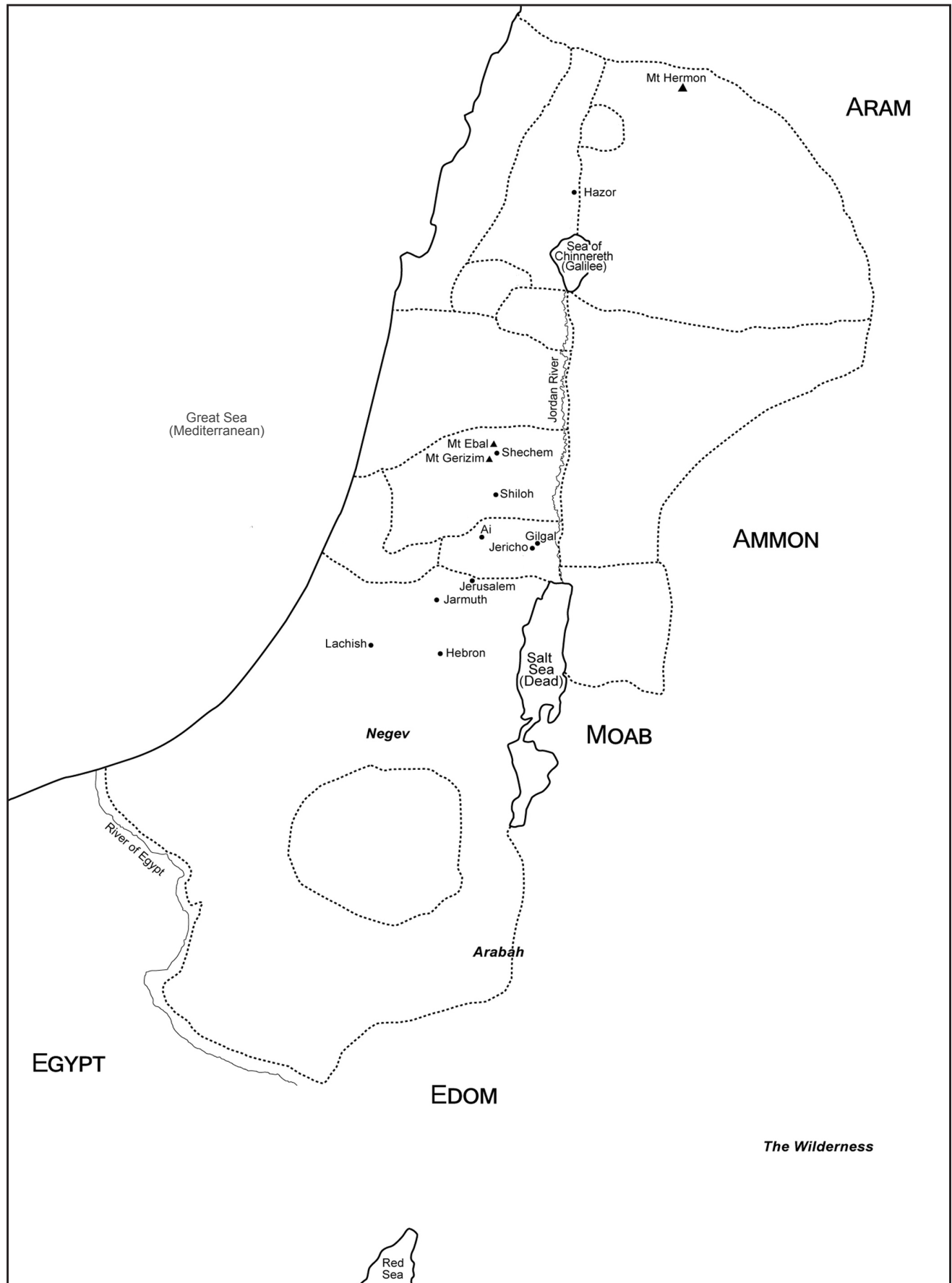
PROPHECY



Internal Character

[illegible][illegible]

The Promised Land Map Study



The Promised Land Map Study

A map study is a work of art. Carefully color and label your map according to the following instructions. Print your name in the lower right-hand corner of your map.

MAP STANDARD

- Outline all bodies of water 1/4-inch wide along their shorelines with a blue colored pencil.
- Label in block print with a black, non-erasable pen the tribes of Israel.
- Outline the borders of each of the twelve tribes with a different colored pencil.
- Outline the remaining land with a green pencil.

LABEL THE TWELVE TRIBES OF ISRAEL

- Asher
- Benjamin
- Dan (located in two places)
- Ephraim
- Gad
- Issachar
- Judah
- Manasseh (located in two places)
- Naphtali
- Rueben
- Simeon
- Zebulun



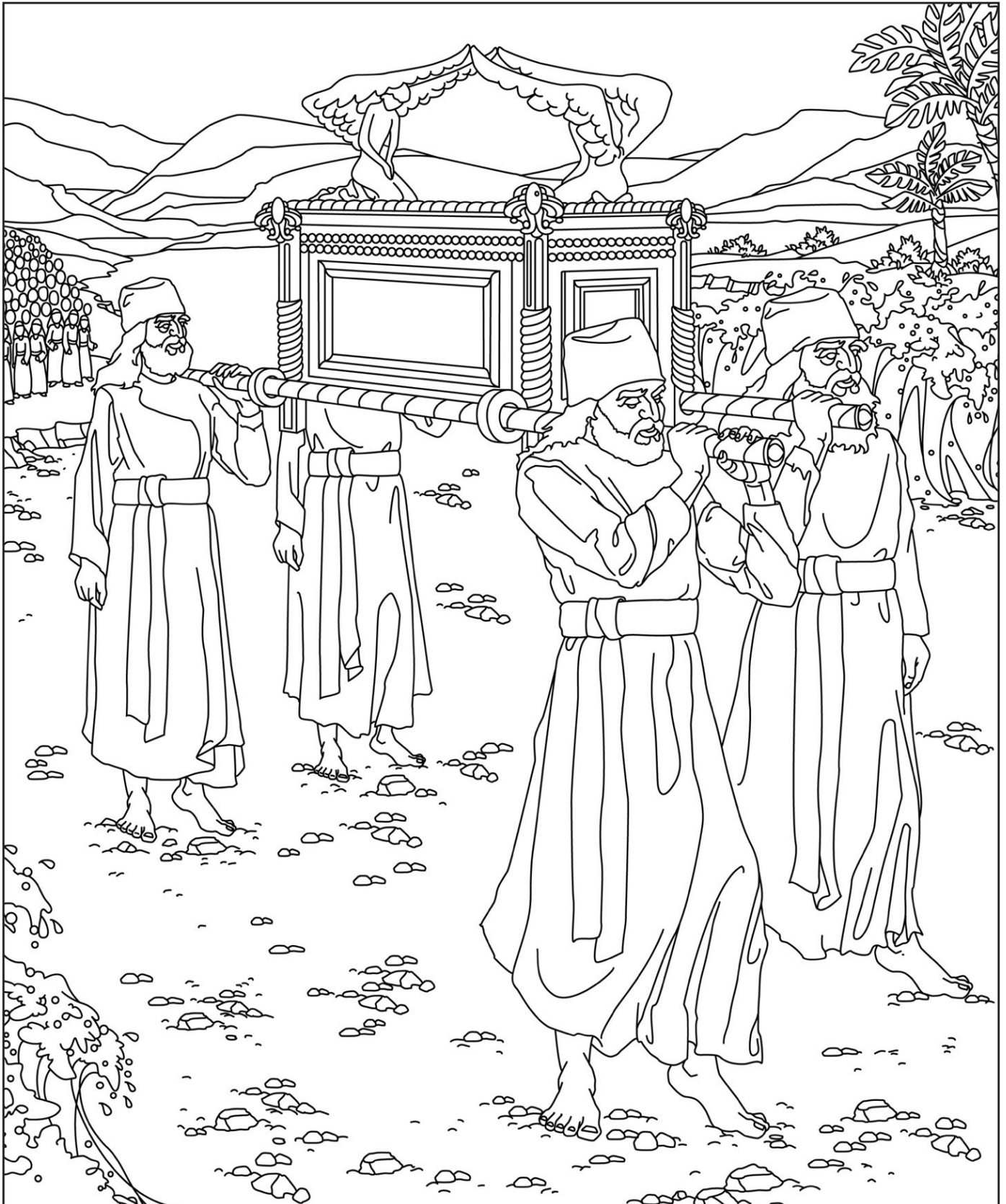
Profile of Rahab

A Gentile woman who put her faith into action. (James 2:25)

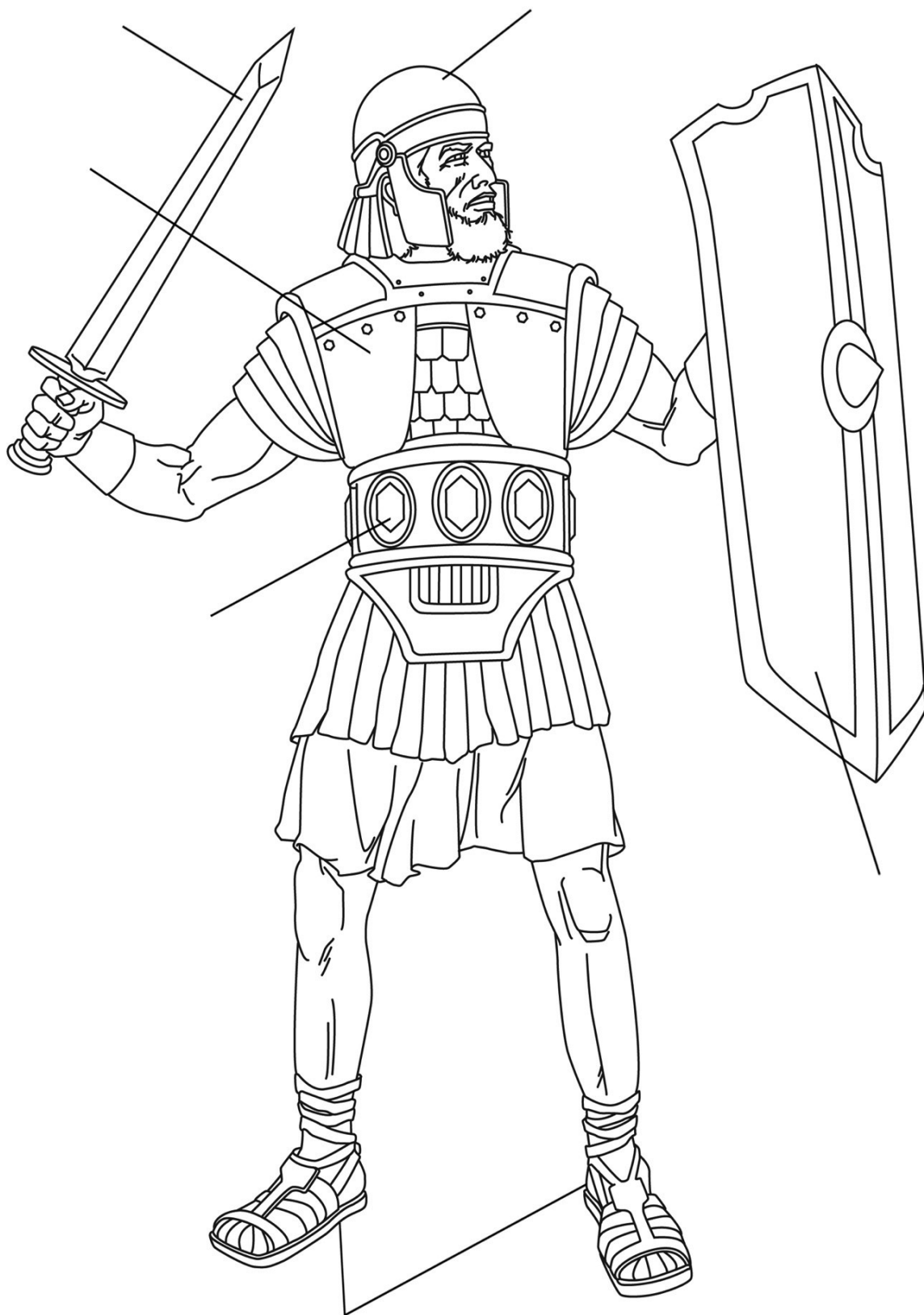
[illegible]

Crossing the Jordan River into the land of promise

The ark of the covenant served as the place of God's holy presence among His people in the Old Covenant (Exodus 25:8). In the New Covenant, Emmanuel, "God with us," indwells the Christian by the power of His Holy Spirit (1 Corinthians 6:19).



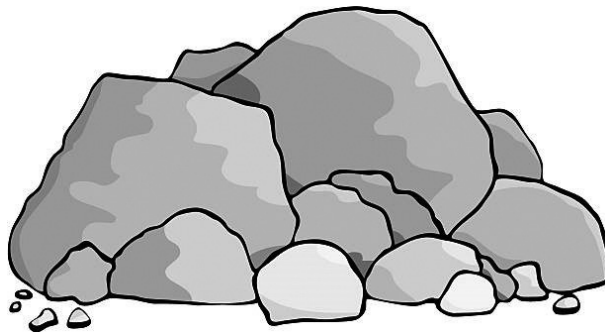
The Christian Warrior's Armor



Our Full Armor of God in Christ

Our spiritual defense against the schemes of the devil (See Ephesians 6:10-18)

Belt of Truth	
Breastplate of Righteousness	
Feet Shod with the Gospel of Peace	
Shield of Faith	
Helmet of Salvation	
Sword of the Spirit	
Prayer	

This image shows a single sheet of white paper with horizontal ruling lines. The lines are evenly spaced and run across the width of the page. There are no margins, text, or other markings on the paper.

"They raised over him a great heap of stones that stands to this day, and the LORD turned from the fierceness of His anger." (Joshua 7:26)

[illegible]

My Inheritance in Christ

LORD, you alone are my inheritance, my cup of blessing. You guard all that is mine. The land you have given me is a pleasant land. What a wonderful inheritance! (Psalm 16:5-6 NLT)

The Spirit Himself testifies with our spirit that we are children of God, and if children, heirs also, heirs of God and fellow heirs with Christ, if indeed we suffer with Him so that we may also be glorified with Him. (Romans 8:16-17)

He predestined us to adoption as sons through Jesus Christ to Himself, according to the kind intention of His will . . . In Him also we have obtained an inheritance, having been predestined according to His purpose who works all things after the counsel of His will. (Ephesians 1:5-11)

Blessed be the God and Father of our Lord Jesus Christ, who according to His great mercy has caused us to be born again to a living hope through the resurrection of Jesus Christ from the dead, to obtain an inheritance which is imperishable and undefiled and will not fade away, reserved in heaven for you, who are protected by the power of God through faith for a salvation ready to be revealed in the last time. In this you greatly rejoice, even though now for a little while, if necessary, you have been distressed by various trials, so that the proof of your faith, being more precious than gold which is perishable, even though tested by fire, may be found to result in praise and glory and honor at the revelation of Jesus Christ; and though you have not seen Him, you love Him, and though you do not see Him now, but believe in Him, you greatly rejoice with joy inexpressible and full of glory, obtaining as the outcome of your faith the salvation of your souls. (1 Peter 1:3-9)

This image shows a single sheet of white paper with horizontal blue or grey ruling lines. The lines are evenly spaced and run across the width of the page. There are approximately 20 lines visible. The paper has a slight shadow on the right side, suggesting it's resting on a surface.